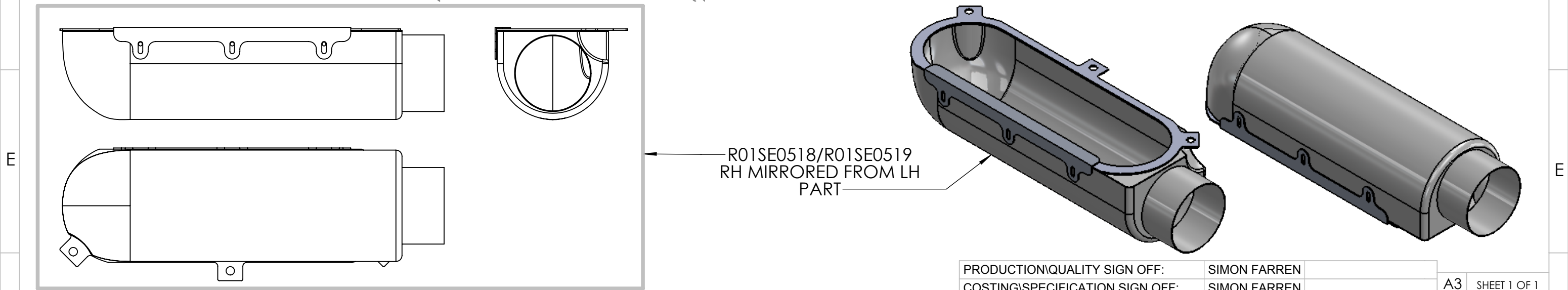
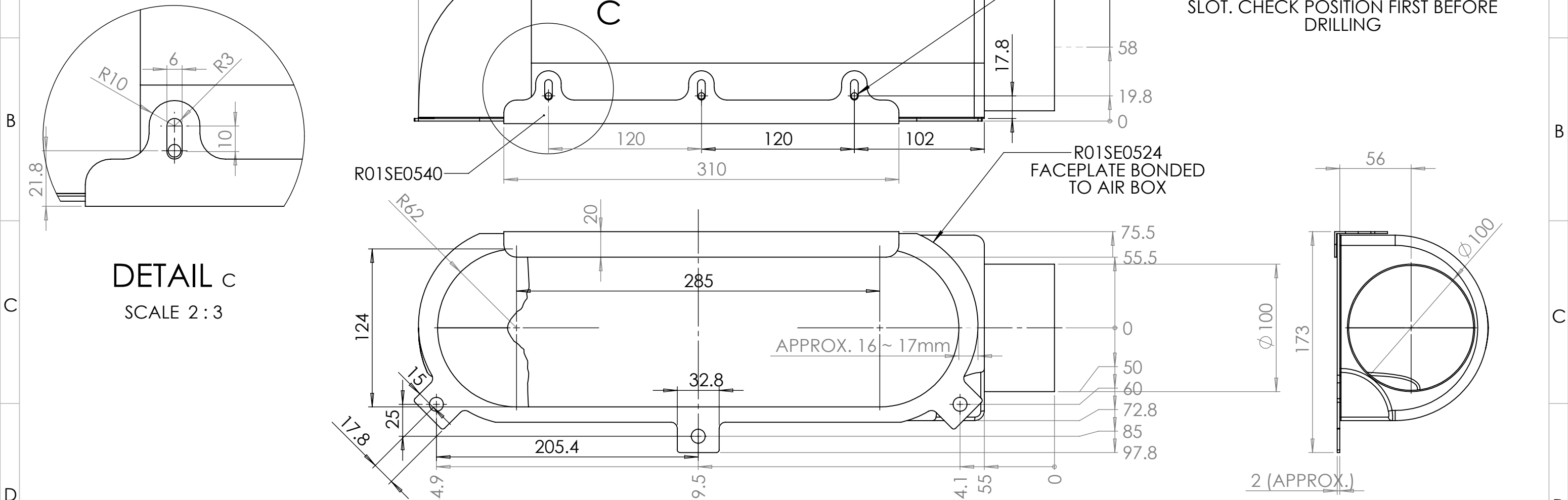



NOTES:

- R01SE0518 RH - C/FIBRE
- R01SE0519 RH - GRP
- R01SE0520 LH - C/FIBRE
- R01SE0521 LH - GRP
- VOLUME: 5.7L

MEASUREMENT IS TO BOTTOM OF BOX BEFORE FACEPLATE BONDED

WHEN FACEPLATE CLAMP IS PRESSED AGAINST THE FACEPLATE THE HOLES IN THE BOX SHOULD BE AT THE BOTTOM OF THE SLOT. CHECK POSITION FIRST BEFORE DRILLING



F	ISS: DESCRIPTION:		INITIALS:	E.C.N. NO:	DATE:	ALL DIMENSIONS IN MILLIMETERS			REMOVE ALL BURRS AND SHARP EDGES UNLESS OTHERWISE STATED  HOLES TO BS4500 1985.  THREADS TO BS3643 1981 METRIC COURSE.  BSP THREADS TO BS 2779 MED FIT  THIS A DRAWING IS A PRIVATE AND CONFIDENTIAL COMMUNICATION		Reverie Ltd Unit 2 Chandlers Row Colchester Essex CO1 2HG 01206 866663 www.reverie.ltd.uk	DRAWN: JC	APP:	PART NO(S).: R01SE0518, R01SE0519, R01SE0520, R01SE0521						
	1	Original issue	JC		02/09/2020	TOLERANCES (AT 20°C) UNLESS OTHERWISE STATED						DATE: 02/09/2020			TITLE: ZOLDER 112D RH & LH 100mm JC50					
						NOMINAL LINEAR DIMENSIONS		SURFACE FINISHES:				FINISH: SEE DRAWING			CUSTOMER: N/A					
						OVER-INCL	< 0.00	0.00				MILLING N8 TURNING N7 GRINDING N6	SCALE: DO NOT SCALE			MATERIAL: SEE SHEET				
						0-200	+/- 0.50	+/- 0.15					WEIGHT: -			INSPECTION GRADE: A-1			PART QUALITY: B	
						250-1000	+/- 1.00	+/- 0.20												
						1000 PLUS	+/- 2.00	+/- 0.30				ANG DIMS +/- 0.5								